

Modular transport system TAKTOFLEX

POWERED BY
SEW-EURODRIVE



- Highly flexible transport system thanks to modular design (180° / 135° / 90° / 45° curves)
- High speeds of up to 4 m/s
- Patented steering system for minimum wear in the bends curves
- Compact design with high load capacity
- Loads up to 10 kg per mover possible

- Optimized transition areas for gentle product transportation
- Durable, robust and reliable
- Customized adaptations possible

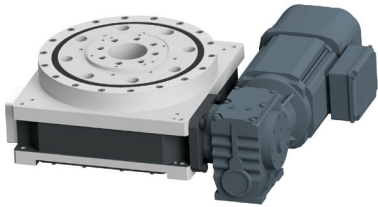
Optional:

- Workpiece carrier identification via RFID
- Power on Board (contactless energy supply of the workpiece carriers)

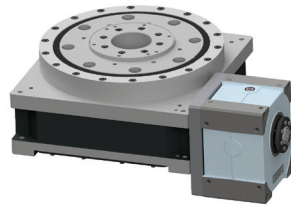
Find out now!
www.taktoflex.com



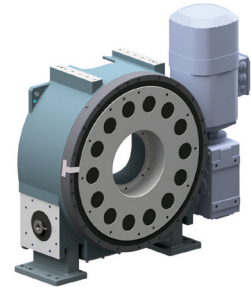
Overview of the TAKTOMAT products



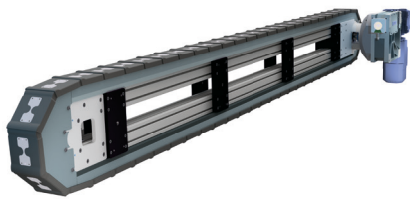
Rotary indexers RTX
with fix number of stops



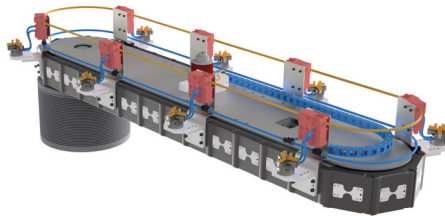
Rotary indexers RTF + TMF
with flexible number of stops



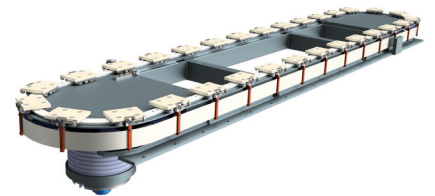
Trunnions VTMF



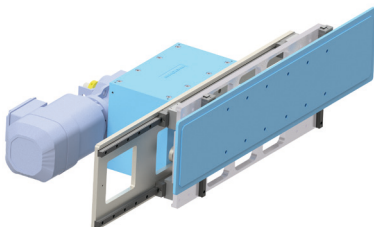
Linear transfer systems LFA



Linear transfer systems LCM



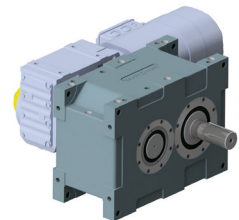
Linear transfer systems LB



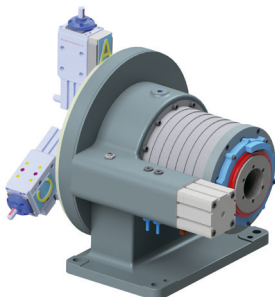
Transfer devices SP



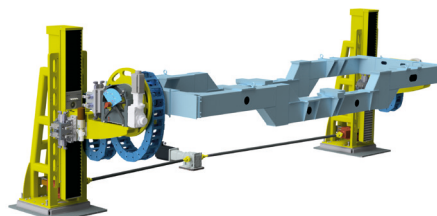
Lift and rotating devices PH



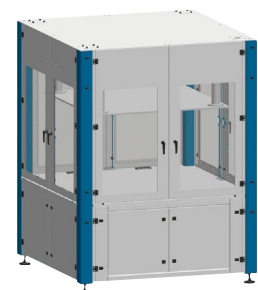
Stepping gears XP



Rototakt



Lift and rotating units



Machine cells TAKTOCUBE

