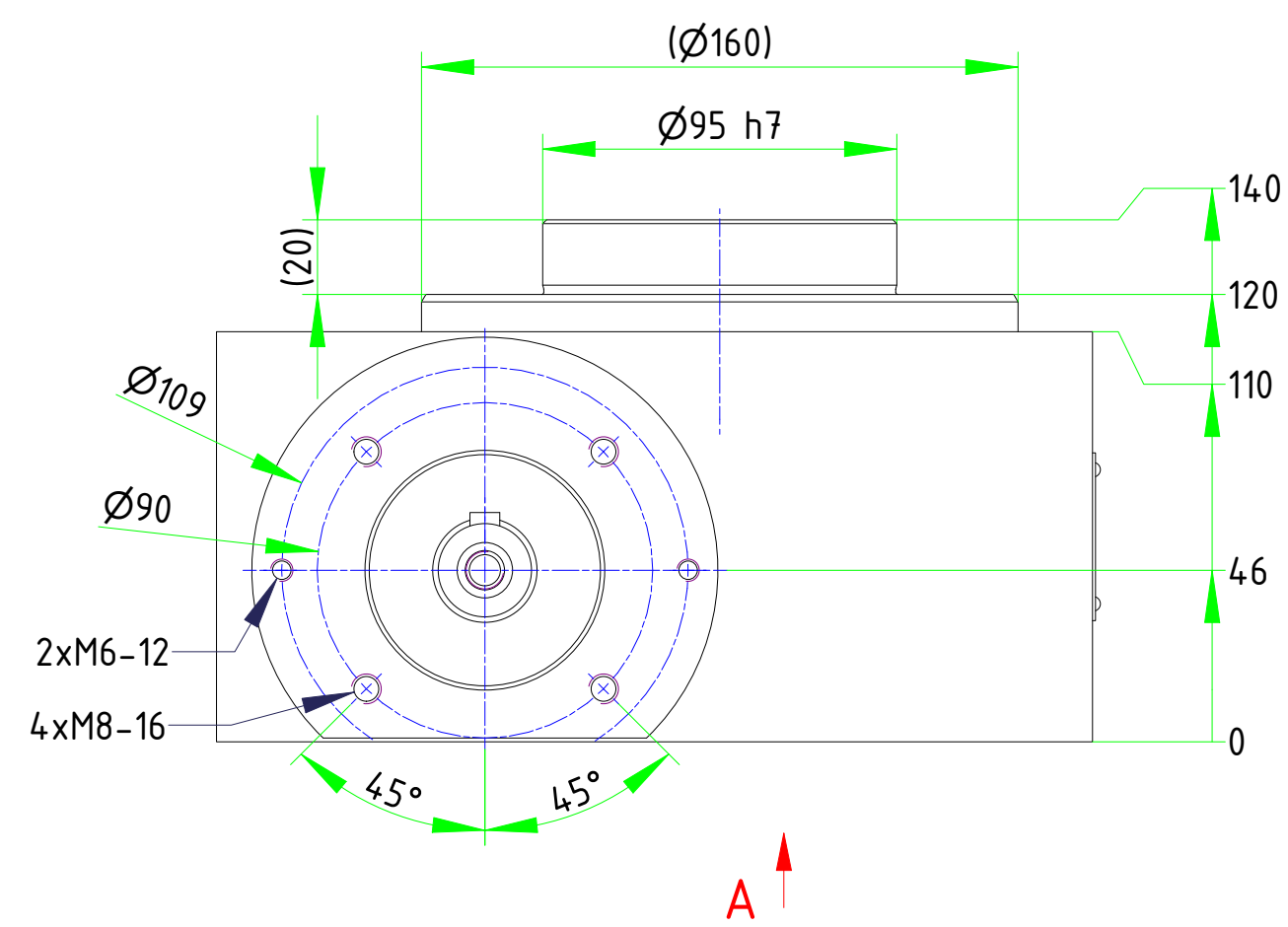
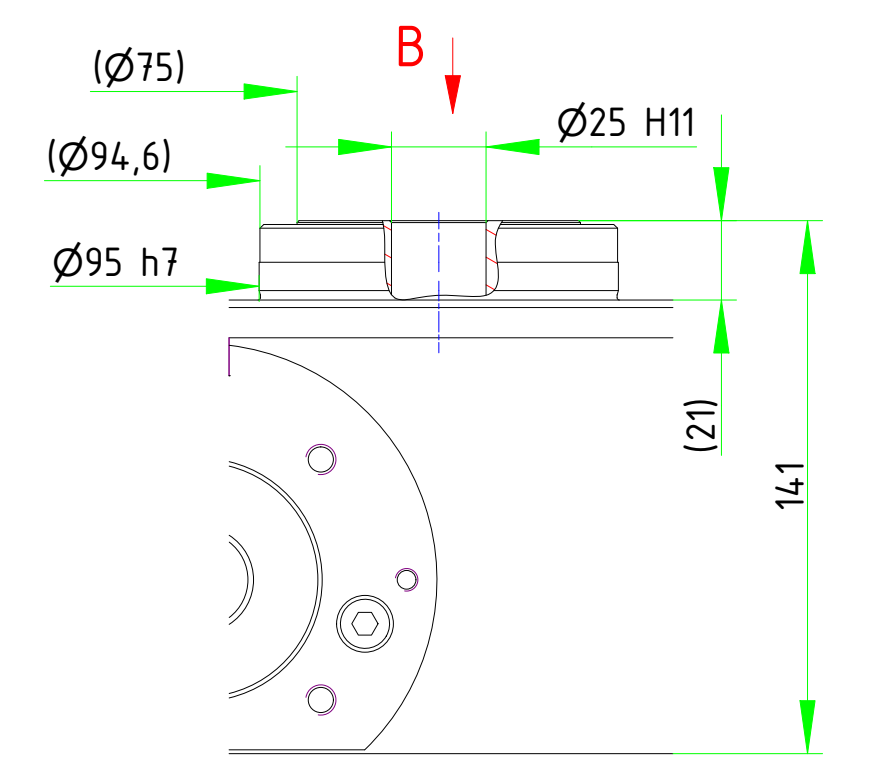


Type:

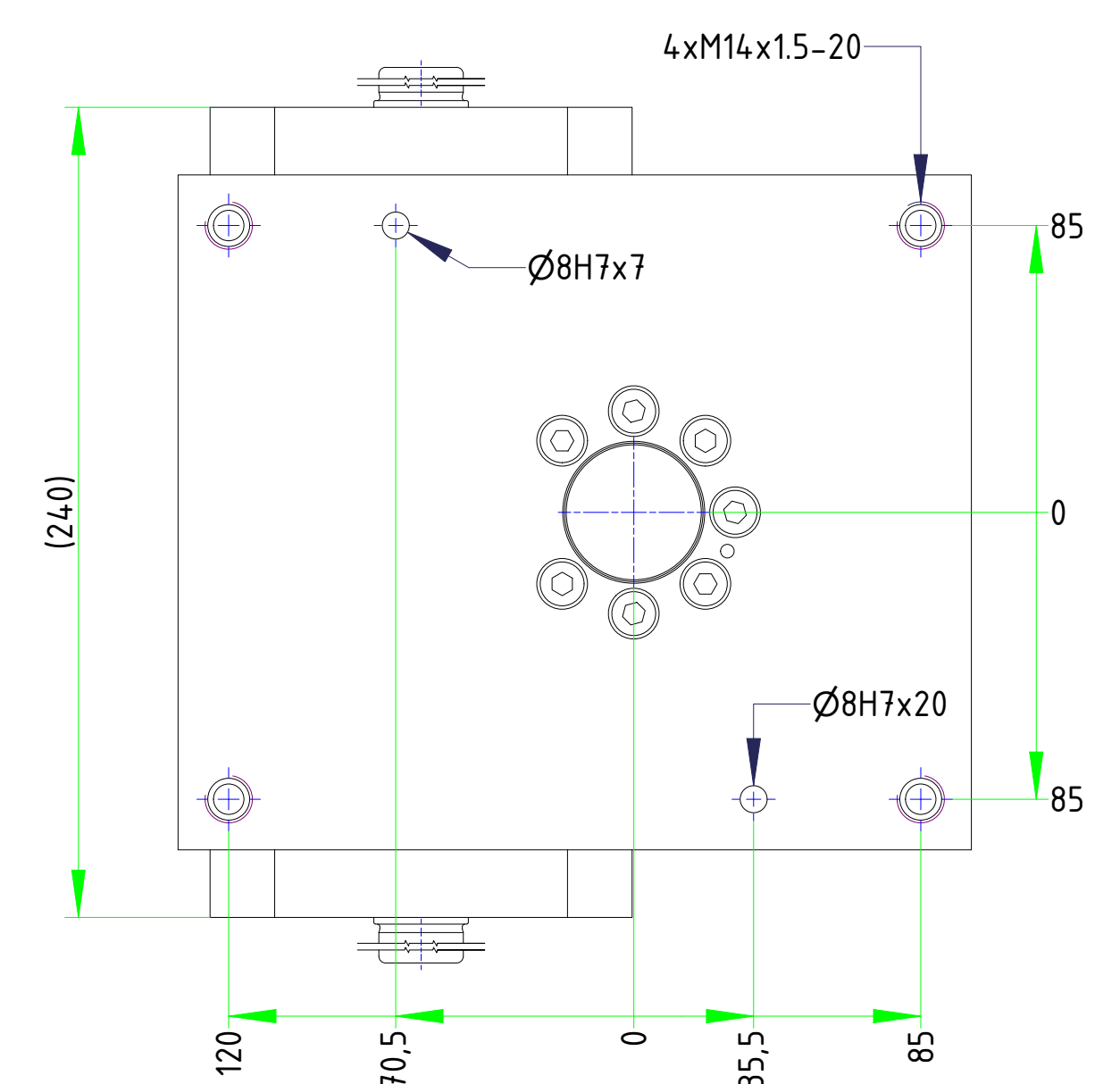
Base



Distance



A (1:2)

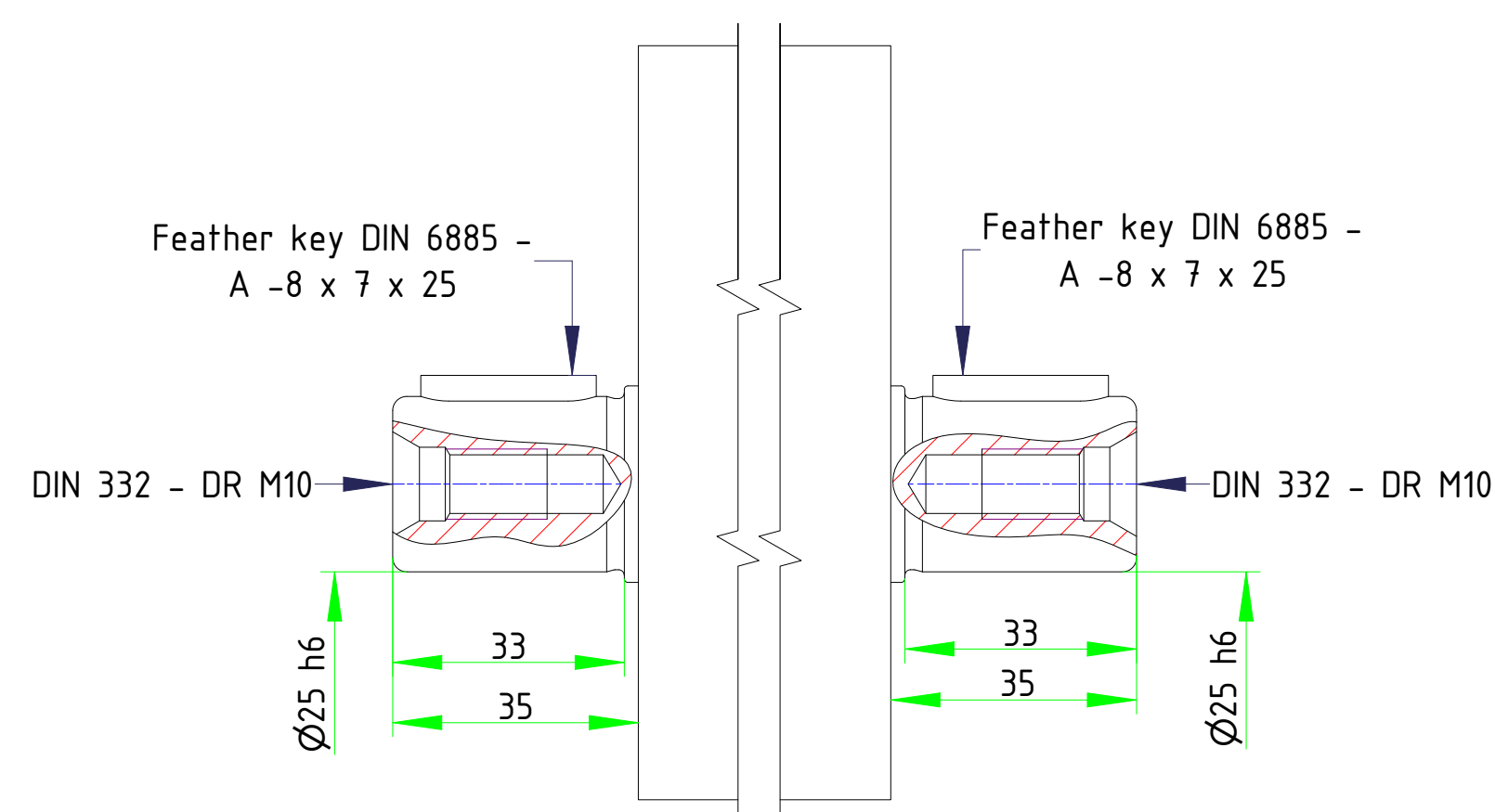


!! Caution !!

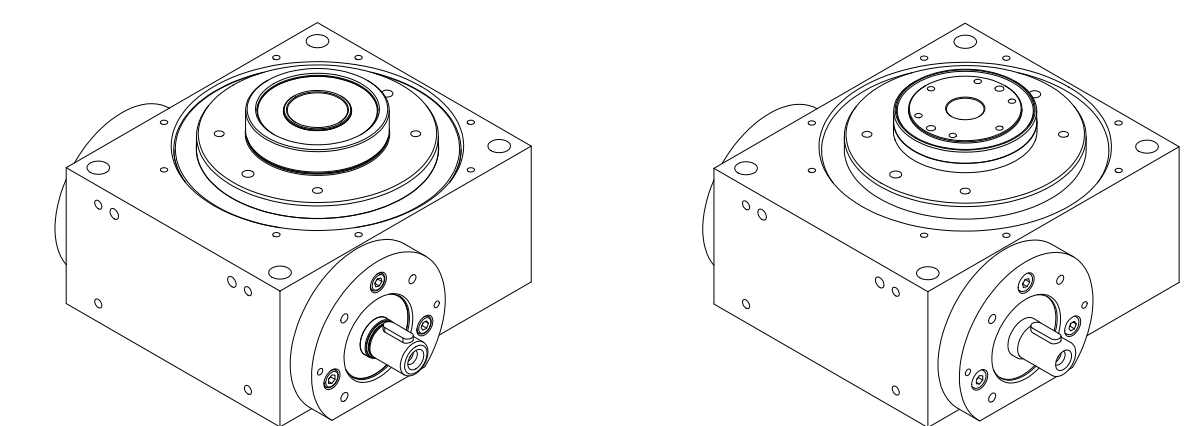
Pattern of drilling depends on division of the rotary table
(see illustration below)

Execution of the drive shaft

ANT01 = for direct mounting

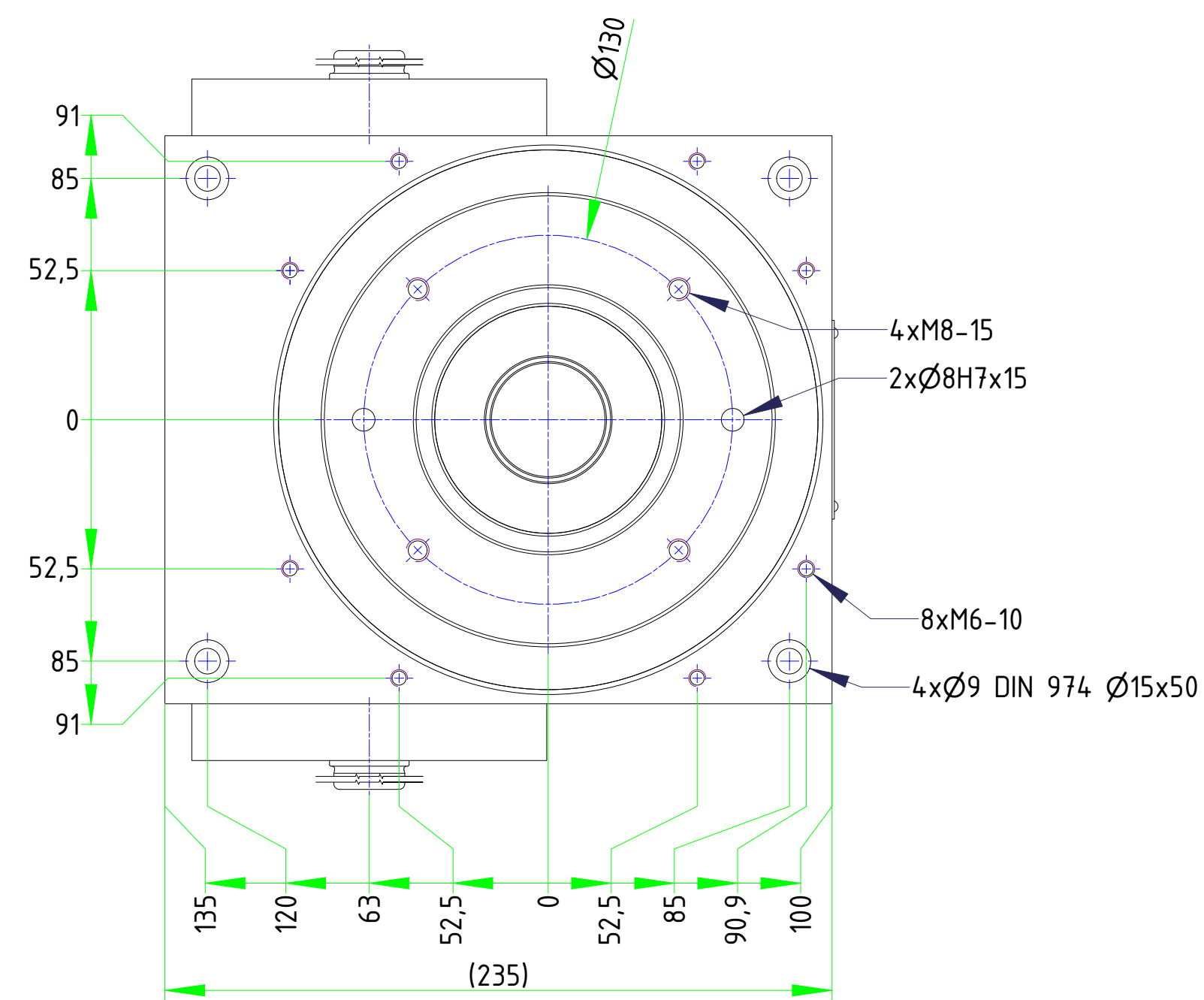


Execution of the output side

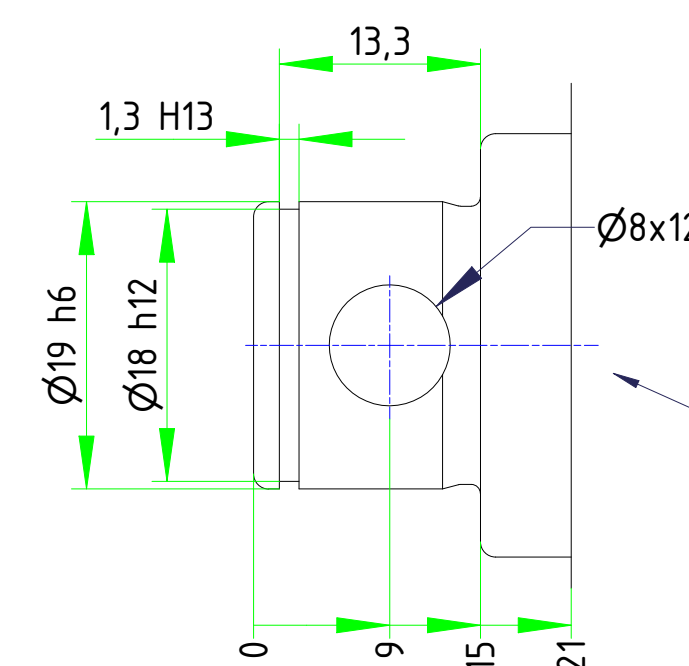


B = Base

D = Distance



Execution of the position indicator



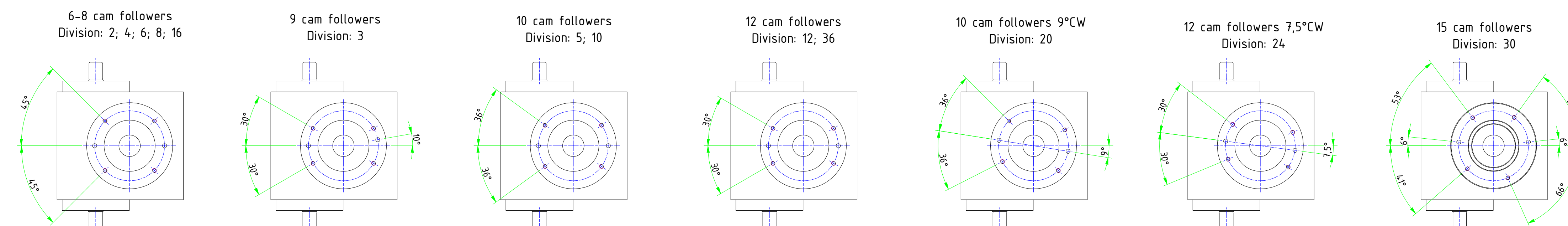
without

1x cam

expandable to 7x cam

encoder

Pattern of drilling depends on division of the rotary table
(4x M8; 2x Ø8H7)



RTF / RTX 550

Meßstab 1:2
Format A1

TAKTOMAT
passion for automation