

Inquiry and order form for TAKTOMAT conveyer LF (1)

Firm _____

E-Mail Address _____

Contact person _____

Project no. / Order no. _____

Tel. / Fax _____

Date _____

Type

- LF080
 LF100
 LF125
 LF150
 other type _____

Distance A [mm] _____

Number of links in line n_l _____

Stroke (1 x, 2 x oder 3 x length of one link) _____

- vertical assembly (use only the links on top)
 horizontal assembly (the links on both sides can be used)

Mode of motion

- Stop mode (fixed index time, variable dwell time)
 index time _____
- Continuous mode (fixed index and dwell time)
 Number of cycles per minute _____
 Ratio index time : dwell time (or angle) _____

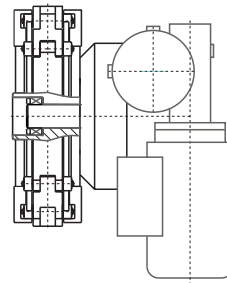
Payload

Weight of a fixture _____

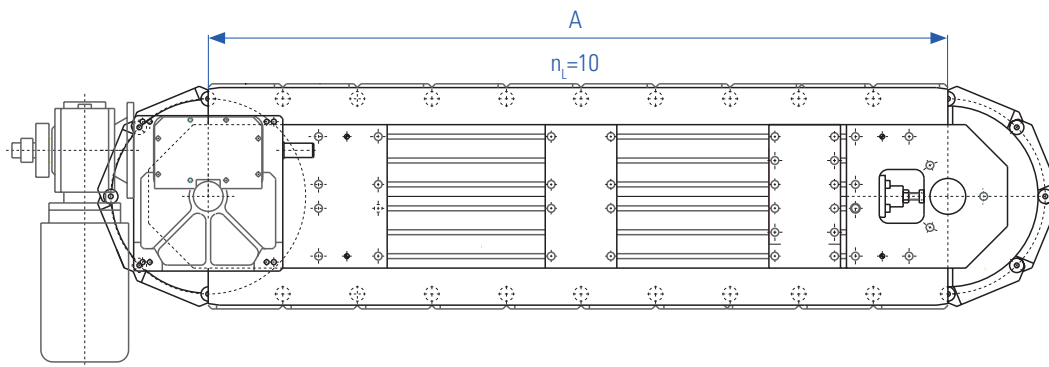
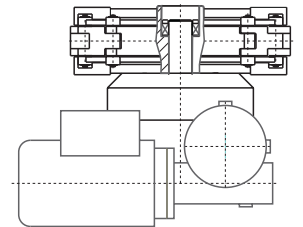
Weight of a workpiece _____

Distance from center point of mass of payload
 to surface of the link _____

vertical assembly

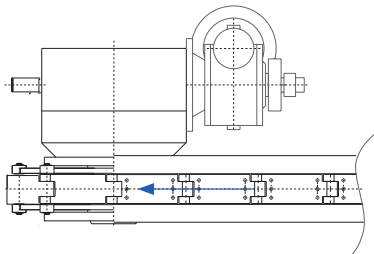


horizontal assembly

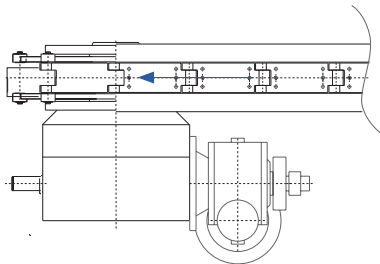


Inquiry and order form for TAKTOMAT conveyor LF (2)

Possible mounting positions for the drive units

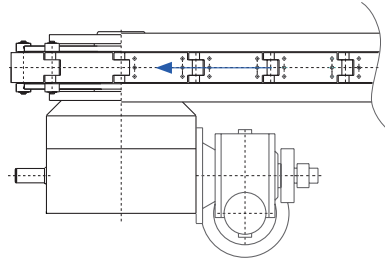


R (in pull direction on the right)

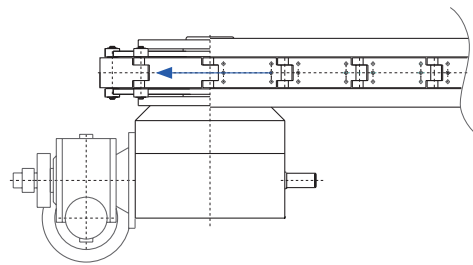


L (in pull direction on the left)

Position of the free drive shaft



A (free drive shaft to the outside)



I (free drive shaft to the inside)

Drive

With indexer type RTxxx

Mounting position of drive L R

Position of the free drive shaft A I

Motor voltage 230/400V 50Hz

277/480V 60Hz

other _____

Brake Voltage 24V DC

230V AC

400V AC

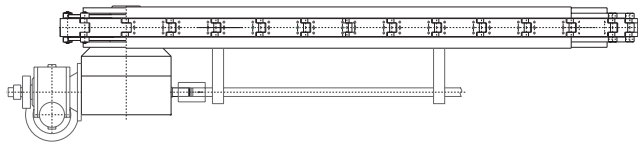
other _____

Safety clutch at the drive yes no

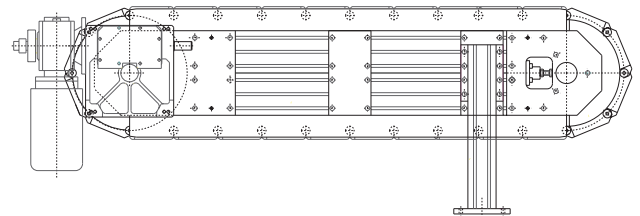
Without drive

With custom specified drive _____

Accessories



Free, synchronously running shaft (drawing no.: _____)



Machine feet (only at vertical assembly)

Number _____

Distance between floor and upper link _____

Universal Controller TIC yes no